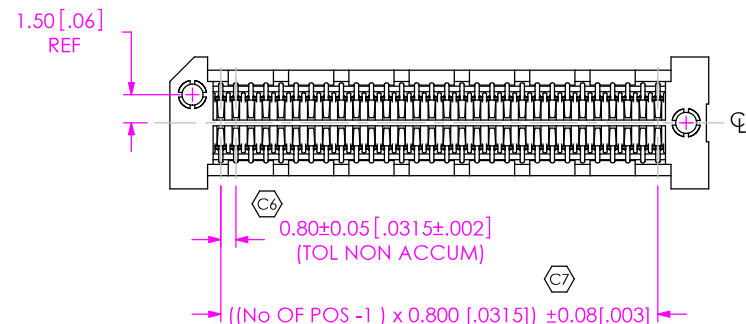
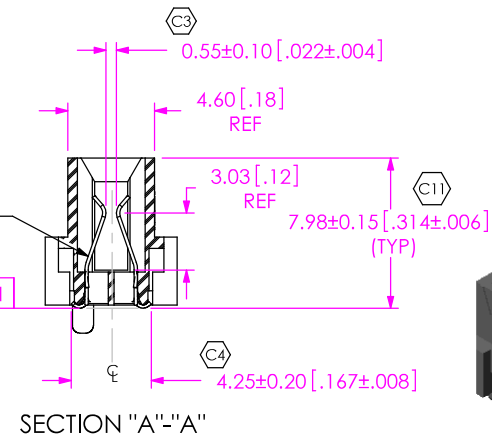
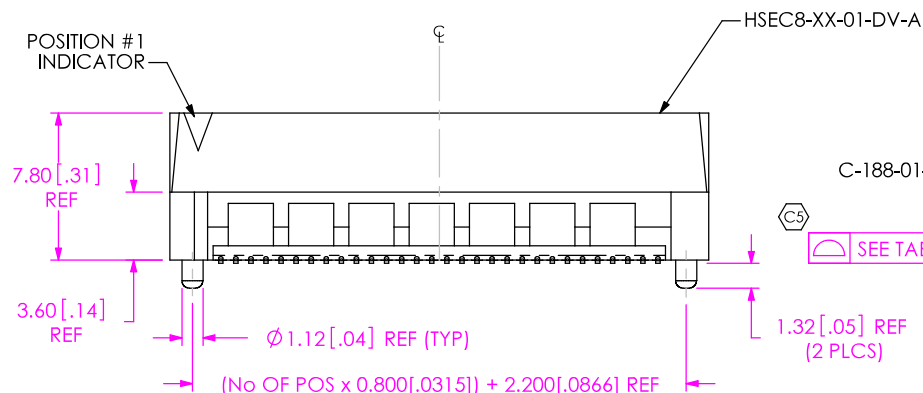
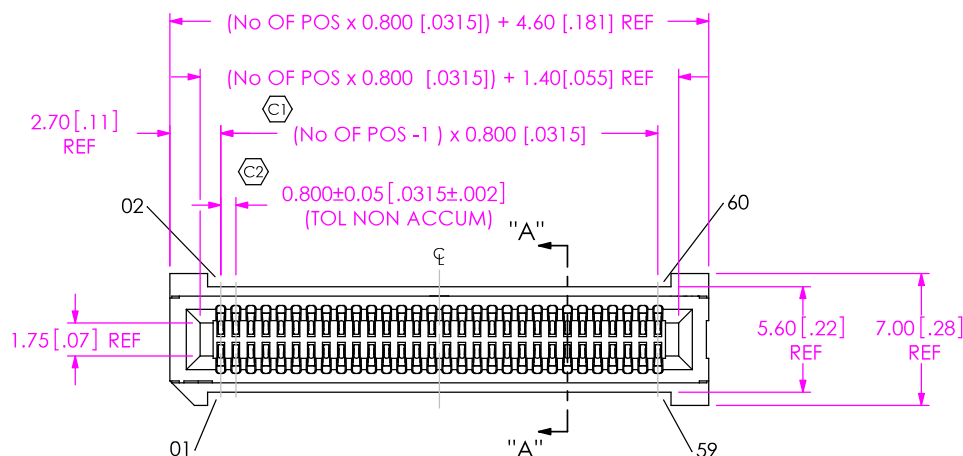


**DESIGNED & DIMENSIONED  
IN MILLIMETERS  
(INCHES FOR REFERENCE ONLY)**

HSEC8-1XXX-XX-XX-DV-X-XX

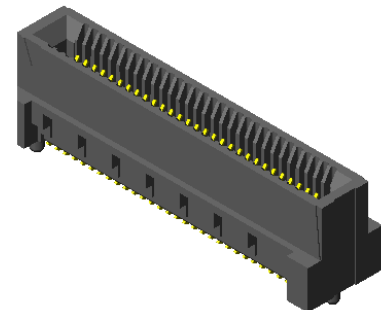


- No OF POSITIONS**  
 -10, -20, & -30 (SEE FIG. 1)  
 -13, -25, -37, -40, -49,  
 -50, & -60 (SEE FIG. 2)  
 -70, -80, -90 & -100 (PER ROW)
- CARD THICKNESS**  
 -01: 1.57mm [.062] THICK CARD
- PLATING SPECIFICATION**  
 Q -SM: SELECTIVE GOLD/MATTE TIN TAIL  
 (USE C-188-01-S)  
 -H: HEAVY GOLD  
 (USE C-188-01-H)  
 Q -S: SELECTIVE GOLD/MATTE TIN TAIL  
 (USE C-188-01-S)

- OPTION**  
 -K: POLYAMIDE FILM PAD  
 (USE K-DOT-217-.313-.005)  
 (SEE FIG. 3)  
 -TR: TAPE & REEL  
 (-10 THRU -70 POS ONLY)  
 (LEAVE BLANK FOR TRAY)  
 -L: LATCHING OPTION  
 (USE HSEC8-XX-01-DV-A-L)  
 (AVAILABLE IN -13, -25, -37  
 & -49 POSITIONS ONLY)  
 (SEE SHEET 3, FIG. 4)  
 -BL: BOARD LOCK OPTION  
 (USE HSEC8-XXX-01-DV-XX-BL)  
 (SEE SHEET 4, FIG. 5)

- ROW SPECIFICATION**  
 -DV: DUAL VERTICAL  
 (USE HSEC8-XXX-01-DV-X)

- OPTION**  
 -A: ALIGNMENT PINS  
 (USE HSEC8-XXX-01-DV-A)  
 (LEAVE BLANK FOR NO -A &  
 USE HSEC8-XXX-01-DV-LC)



**FIG. 1**  
 FOR POSITIONS -10, -20 & -30  
 (SHOWN: HSEC8-130-01-XX-D-DV-A)

TABLE 1	
No OF POS	COPLANARITY
-10 THRU -60	0.102 [.0040]
-70 THRU -100	0.152 [.0060]

DO NOT  
SCALE FROM  
THIS PRINT

- NOTES:
1. Ⓢ REPRESENTS A CRITICAL DIMENSION.
  2. BURR ALLOWANCE: 0.04[.0015] MAX.
  3. MINIMUM PUSHOUT FORCE: 2.2 NEWTONS.
  4. ALL TAIL TO TAIL DIMENSIONS MEASURED TIP TO TIP.
  5. ASSEMBLIES TO BE PACKAGED IN TRAYS.

UNLESS OTHERWISE SPECIFIED,  
DIMENSIONS ARE IN MILLIMETERS.

**TOLERANCES ARE:**  
 DECIMALS ANGLES  
 .X: ± .3 [.01] 2°  
 .XX: ± .13 [.005]  
 .XXX: ± .051 [.0020]

**PROPRIETARY NOTE**  
 THIS DOCUMENT CONTAINS INFORMATION  
 CONFIDENTIAL AND PROPRIETARY TO  
 SAMTEC, INC. AND SHALL NOT BE REPRODUCED  
 OR TRANSFERRED TO OTHER DOCUMENTS OR  
 DISCLOSED TO OTHERS OR USED FOR ANY  
 PURPOSE OTHER THAN THAT WHICH IT WAS  
 OBTAINED WITHOUT THE EXPRESSED WRITTEN  
 CONSENT OF SAMTEC, INC.

**MATERIAL:** DO NOT SCALE DRAWING SHEET SCALE: 1:0.4  
 INSULATOR: LCP, COLOR: BLACK  
 CONTACT: BeCu



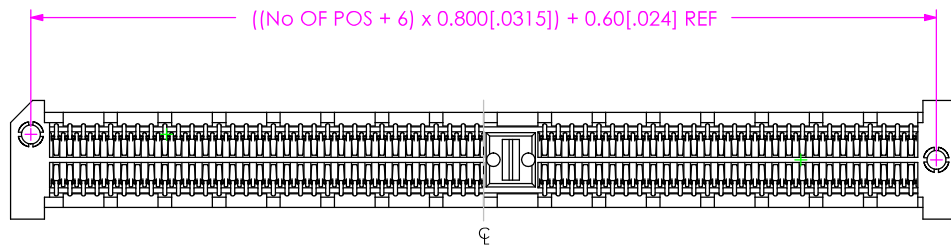
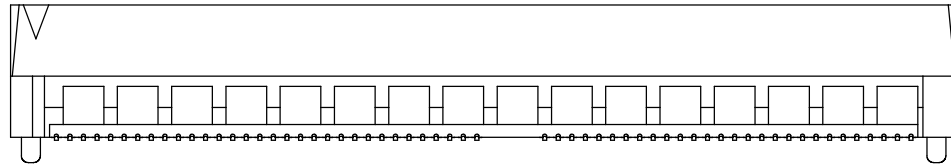
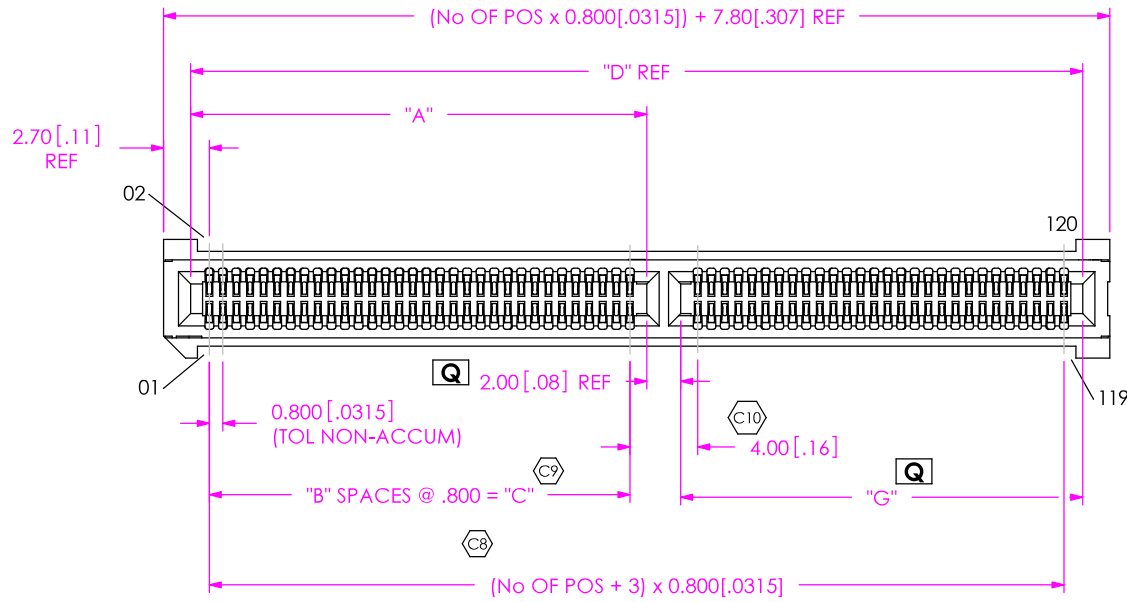
**SAMTEC**

520 PARK EAST BLVD, NEW ALBANY, IN 47150  
 \* PHONE: 812.944.6733 FAX: 812.948.5047  
 e-Mail: [INFO@SAMTEC.COM](mailto:INFO@SAMTEC.COM) CODE: 55322

DESCRIPTION:  
 0.8mm HIGH SPEED ASSEMBLY

DWG. NO.  
**HSEC8-1XXX-XX-XX-DV-X-XX**

BY: BRATCHER 01/24/03 SHEET 1 OF 4



**FIG. 2**

FOR POSITIONS -13, -25, -37, -40, -49, -50, -60, -70, -80, -90, -100 (SAME AS FIG. 1, UNLESS OTHERWISE STATED) (SHOWN: HSEC8-160-01-XX-DV-A)

TABLE 2					
No OF POS	"A" REF	"B"	"C"	"D" REF	"G" REF
-13	6.10[.240]	5	4.000[.1575]	15.00[.591]	6.90 [.270]
-25	6.10[.240]	5	4.000[.1575]	24.60[.969]	16.50 [.648]
-37	18.10[.713]	20	16.000[.6299]	34.20[1.346]	14.10 [.554]
-40	18.90[.744]	21	16.800[.6614]	36.60[1.441]	15.70 [.617]
-49	22.90[.902]	26	20.800[.8189]	43.80[1.724]	18.90 [.743]
-50	22.90[.902]	26	20.800[.8189]	44.60[1.756]	19.70 [.774]
-60	26.90[1.059]	31	24.800[.9763]	52.60[2.071]	23.70 [.932]
-70	26.90[1.059]	31	24.800[.9763]	60.60[2.386]	31.70 [1.247]
-80	26.90[1.059]	31	24.800[.9763]	68.60[2.701]	39.70 [1.562]
-90	26.90[1.059]	31	24.800[.9763]	76.60[3.016]	47.70 [1.877]
-100	26.90[1.059]	31	24.800[.9763]	84.60[3.331]	55.70 [2.192]

**FIG. 3**  
-K OPTION  
(USE K-DOT-.217-.313-.005)

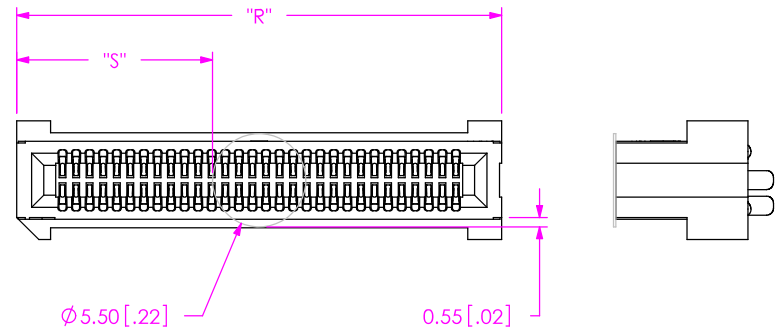
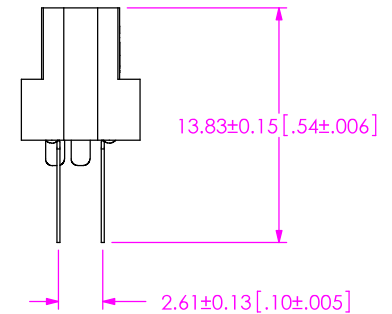


TABLE 3			
OPTION	No OF POS	"R"	"S"
NONE	-10 THRU -30	(No OF POS x 0.80[.0315]) + 4.60[.181] REF	((("R" - 5.50[.217]) / 2) + /-0.51[.020])
	-13, -25, -37, -40 THRU -100	(No OF POS x 0.80[.0315]) + 7.80[.307] REF	
-L	-13, -25, -37, & -49	(No OF POS x 0.80[.0315]) + 18.40[.724] REF	((("R" - 5.50[.217]) / 2) + /-0.51[.020])
-BL	-10 THRU -30	(No OF POS x 0.80[.0315]) + 15.85[.624] REF	
	-13, -25, -37, -40 THRU -100	(No OF POS x 0.80[.0315]) + 19.05[.750] REF	

**IN-PROCESS**



F:\DWG\MISC\MKTG\HSEC8-1XXX-XX-XX-DV-X-XX-MKT.SLDDRW

**PROPRIETARY NOTE**

THIS DOCUMENT CONTAINS INFORMATION CONFIDENTIAL AND PROPRIETARY TO SAMTEC, INC. AND SHALL NOT BE REPRODUCED OR TRANSFERRED TO OTHER DOCUMENTS OR DISCLOSED TO OTHERS OR USED FOR ANY PURPOSE OTHER THAN THAT WHICH IT WAS OBTAINED WITHOUT THE EXPRESSED WRITTEN CONSENT OF SAMTEC, INC.

DO NOT SCALE DRAWING

SHEET SCALE: 1:0.444444

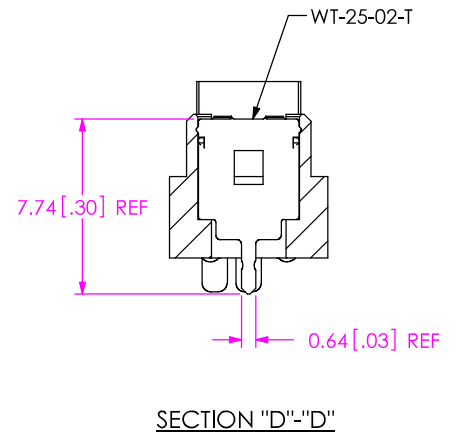
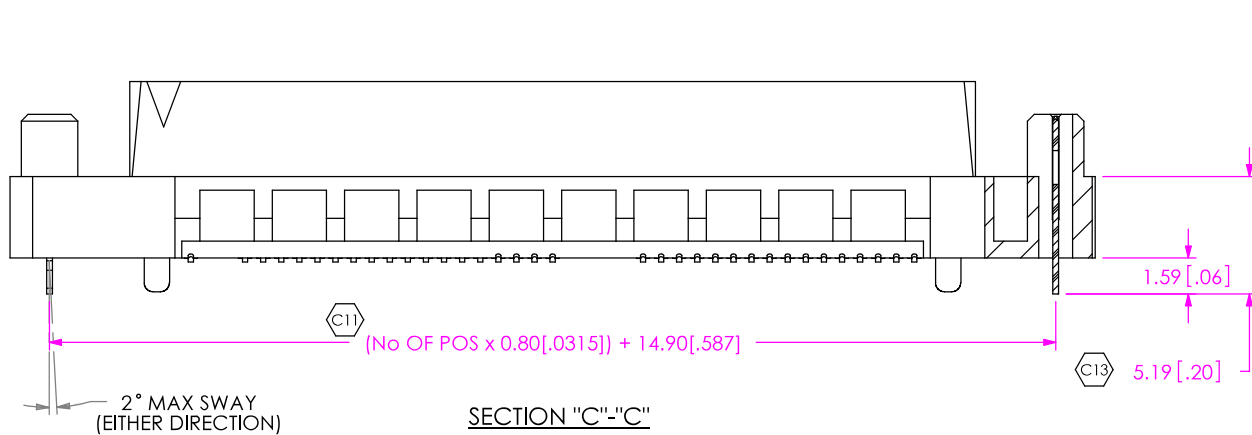
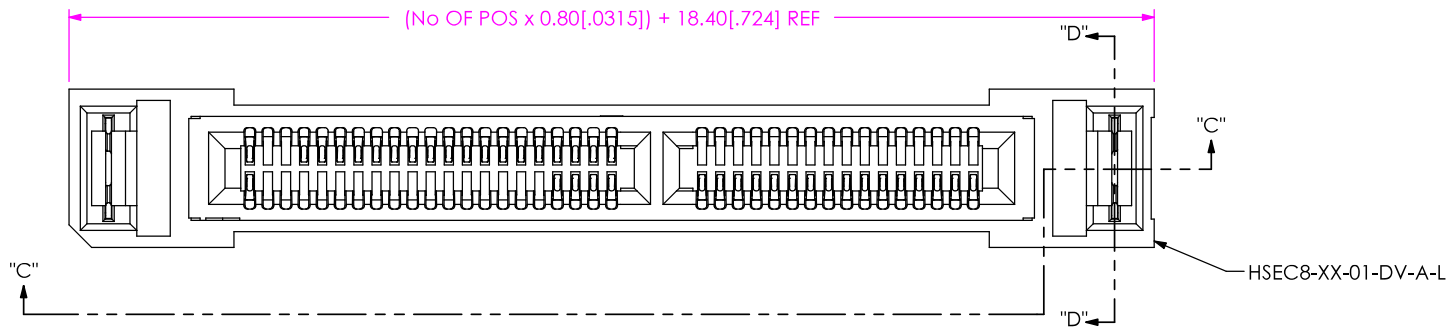
**SAMTEC**

520 PARK EAST BLVD, NEW ALBANY, IN 47150  
\* PHONE: 812.944.6733 FAX: 812.948.5047  
e-Mail: [INFO@SAMTEC.COM](mailto:INFO@SAMTEC.COM) CODE: 55322

DESCRIPTION:  
0.8mm HIGH SPEED ASSEMBLY

DWG. NO.  
**HSEC8-1XXX-XX-XX-DV-X-XX**

BY: BRATCHER 01/24/03 SHEET 2 OF 4



**FIG. 4**  
 -L: LATCHING OPTION  
 AVAILABLE IN -13, -25, -37 & -49 POSITIONS ONLY  
 (SAME AS FIG. 2, UNLESS OTHERWISE STATED)  
 (SHOWN: HSEC8-137-01-XX-DV-A-L)

**PROPRIETARY NOTE**  
 THIS DOCUMENT CONTAINS INFORMATION  
 CONFIDENTIAL AND PROPRIETARY TO  
 SAMTEC, INC. AND SHALL NOT BE REPRODUCED  
 OR TRANSFERRED TO OTHER DOCUMENTS OR  
 DISCLOSED TO OTHERS OR USED FOR ANY  
 PURPOSE OTHER THAN THAT WHICH IT WAS  
 OBTAINED WITHOUT THE EXPRESSED WRITTEN  
 CONSENT OF SAMTEC, INC.

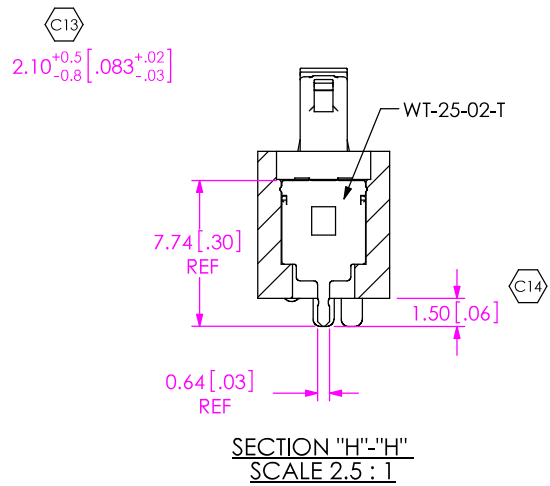
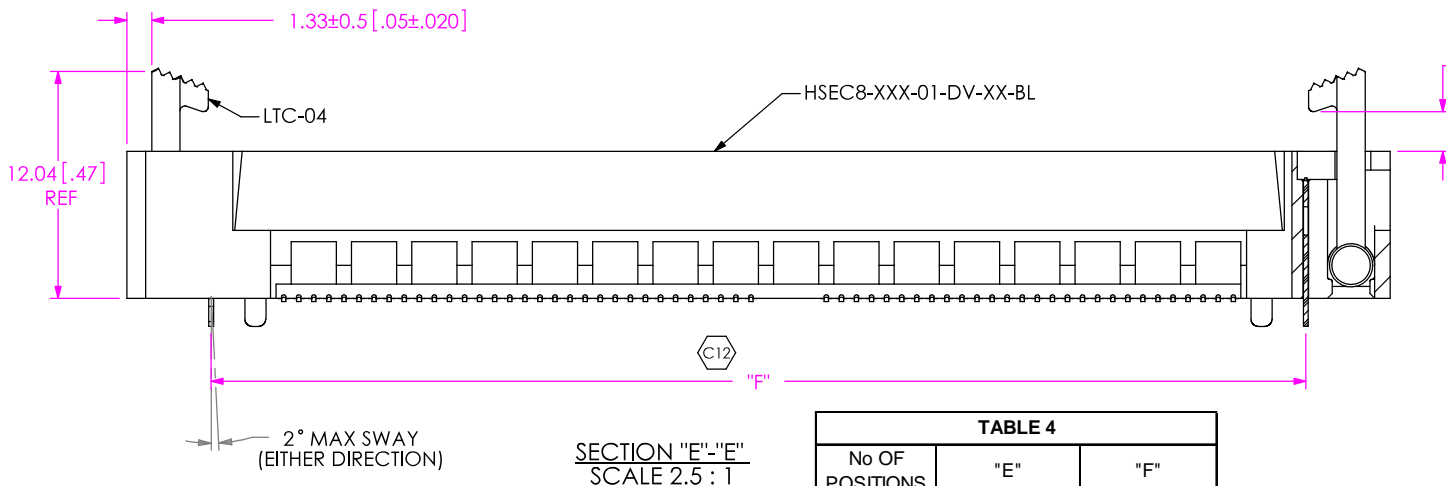
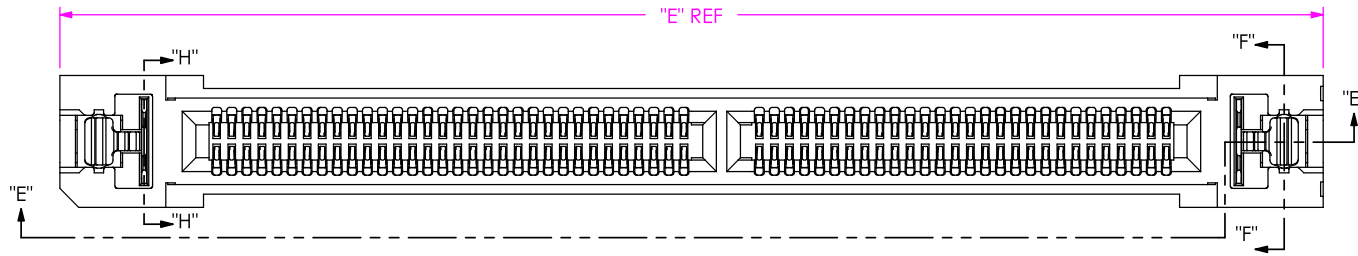
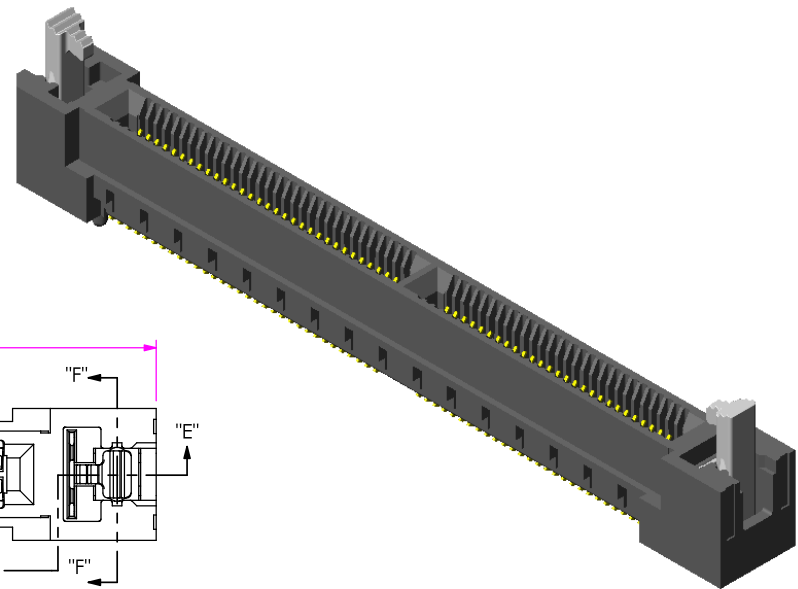
DO NOT SCALE DRAWING

SHEET SCALE: 1:0.333333

**SAMTEC**

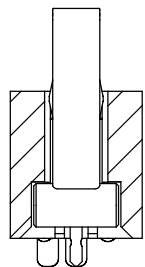
520 PARK EAST BLVD, NEW ALBANY, IN 47150  
 \* PHONE: 812.944.6733 FAX: 812.948.5047  
 e-Mail: [INFO@SAMTEC.COM](mailto:INFO@SAMTEC.COM) CODE: 55322

DESCRIPTION: 0.8mm HIGH SPEED ASSEMBLY	
DWG. NO. <b>HSEC8-1XXX-XX-XX-DV-X-XX</b>	
BY: BRATCHER 01/24/03	SHEET 3 OF 4



**TABLE 4**

No OF POSITIONS	"E"	"F"
-10	23.85 [0.939]	14.90 [0.587]
-13	29.45 [1.159]	20.50 [0.807]
-20	31.85 [1.254]	22.90 [0.902]
-25	39.05 [1.537]	30.10 [1.185]
-30	39.85 [1.569]	30.90 [1.217]
-37	48.65 [1.915]	39.70 [1.563]
-40	51.05 [2.010]	42.10 [1.657]
-49	58.25 [2.293]	49.30 [1.941]
-50	59.05 [2.325]	50.10 [1.972]
-60	67.05 [2.640]	58.10 [2.287]
-70	75.05 [2.955]	66.10 [2.602]
-80	83.05 [3.270]	74.10 [2.917]
-90	91.05 [3.585]	82.10 [3.232]
-100	99.05 [3.900]	90.10 [3.547]



SECTION "F"-"F"  
SCALE 2.5 : 1

**FIG. 5**  
-BL: BOARD LOCK OPTION  
(SAME AS FIG. 2, UNLESS OTHERWISE STATED)  
(SHOWN: HSEC8-160-01-XX-DV-A-BL)

**PROPRIETARY NOTE**  
THIS DOCUMENT CONTAINS INFORMATION CONFIDENTIAL AND PROPRIETARY TO SAMTEC, INC. AND SHALL NOT BE REPRODUCED OR TRANSFERRED TO OTHER DOCUMENTS OR DISCLOSED TO OTHERS OR USED FOR ANY PURPOSE OTHER THAN THAT WHICH IT WAS OBTAINED WITHOUT THE EXPRESSED WRITTEN CONSENT OF SAMTEC, INC.

DO NOT SCALE DRAWING  
SHEET SCALE: 1:0.333333

**SAMTEC**

520 PARK EAST BLVD, NEW ALBANY, IN 47150  
\* PHONE: 812.944.6733 \* FAX: 812.948.5047  
e-Mail: [INFO@SAMTEC.COM](mailto:INFO@SAMTEC.COM) CODE: 55322

DESCRIPTION:  
0.8mm HIGH SPEED ASSEMBLY

DWG. NO.  
**HSEC8-1XXX-XX-XX-DV-X-XX**

BY: BRATCHER 01/24/03 SHEET 4 OF 4